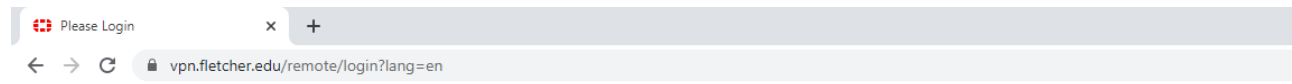




## FortiClient VPN Instructions

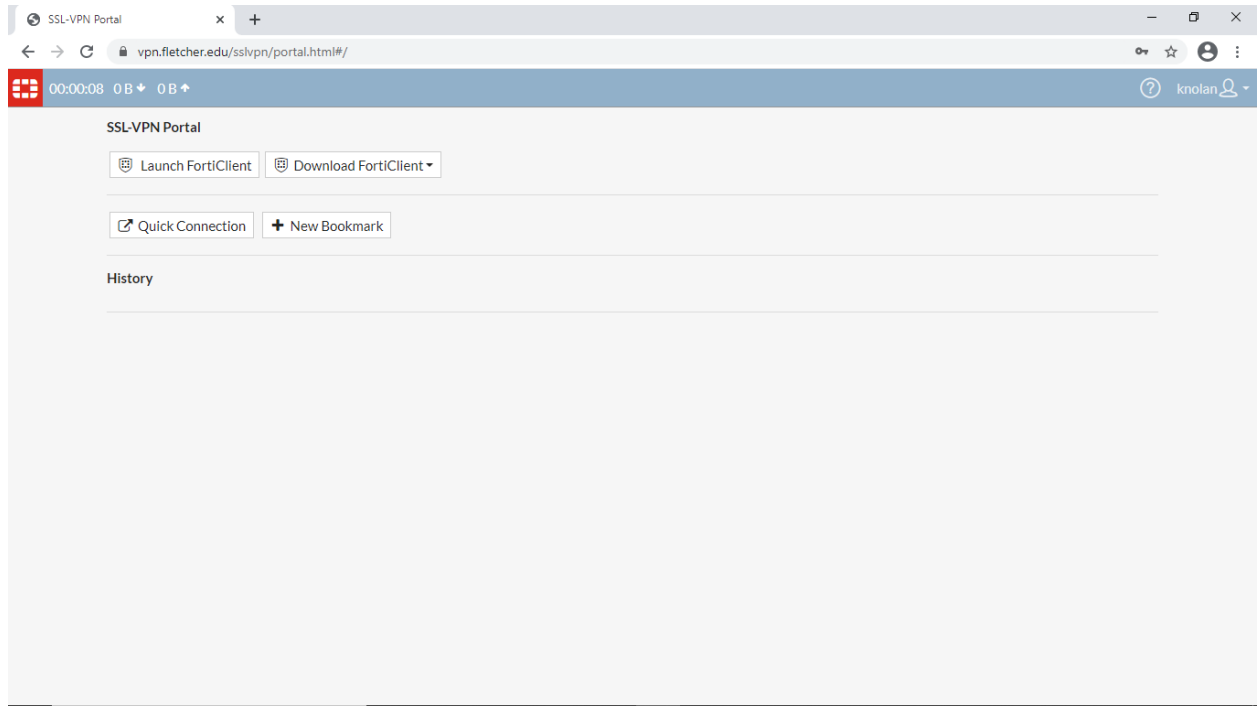
Go to <https://vpn.fletcher.edu>

Login with your Fletcher computer credentials.

A screenshot of the login form on the vpn.fletcher.edu website. The form is titled "Please Login" and contains the following elements:

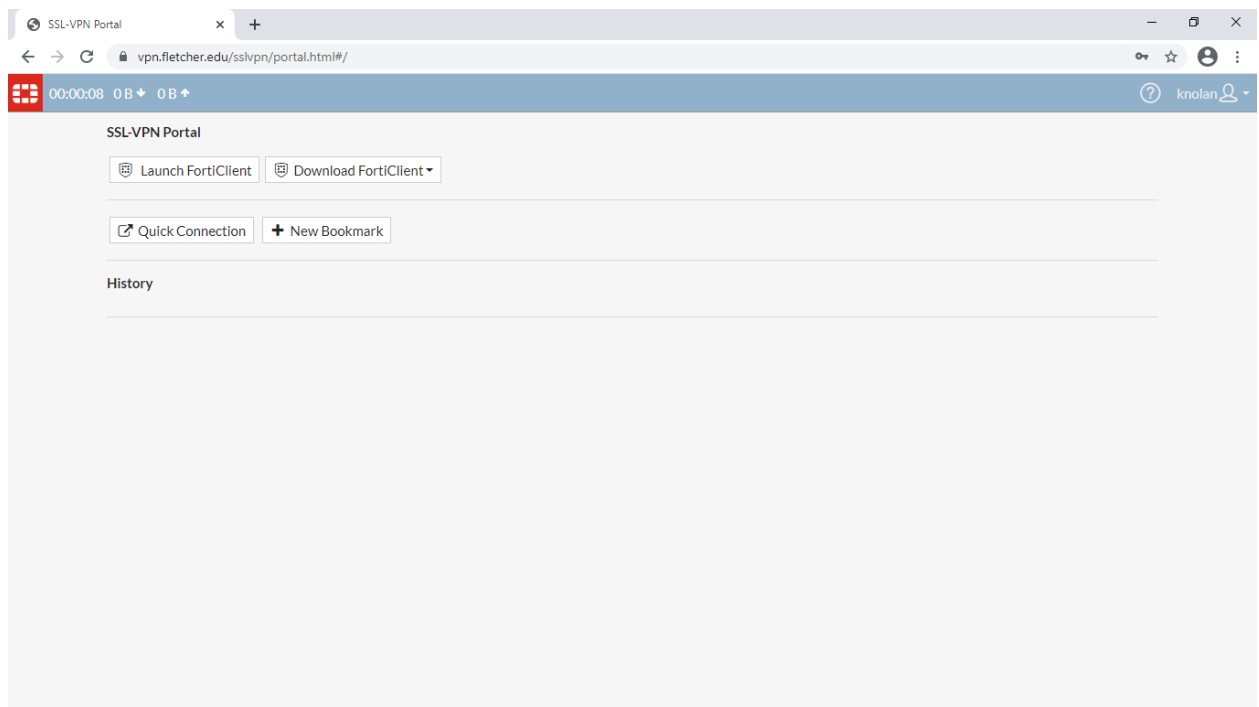
- A text input field labeled "Username".
- A text input field labeled "Password".
- A green button labeled "Login".
- A white button labeled "Launch FortiClient".

Once you're logged in you will see the following screen:

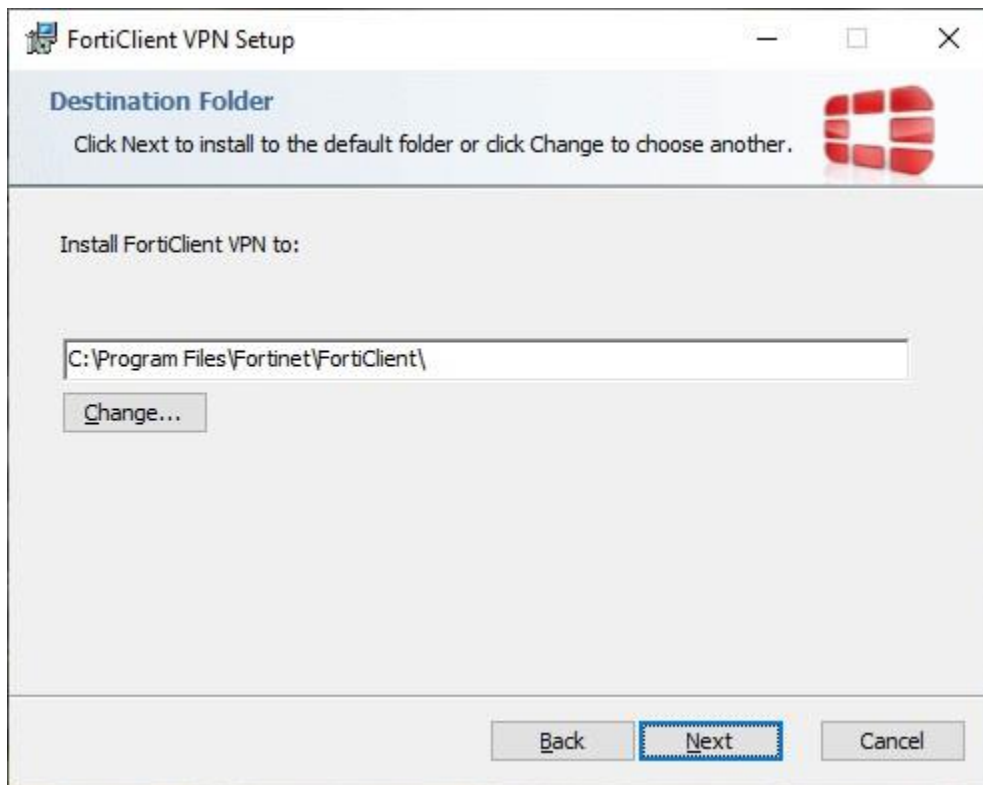


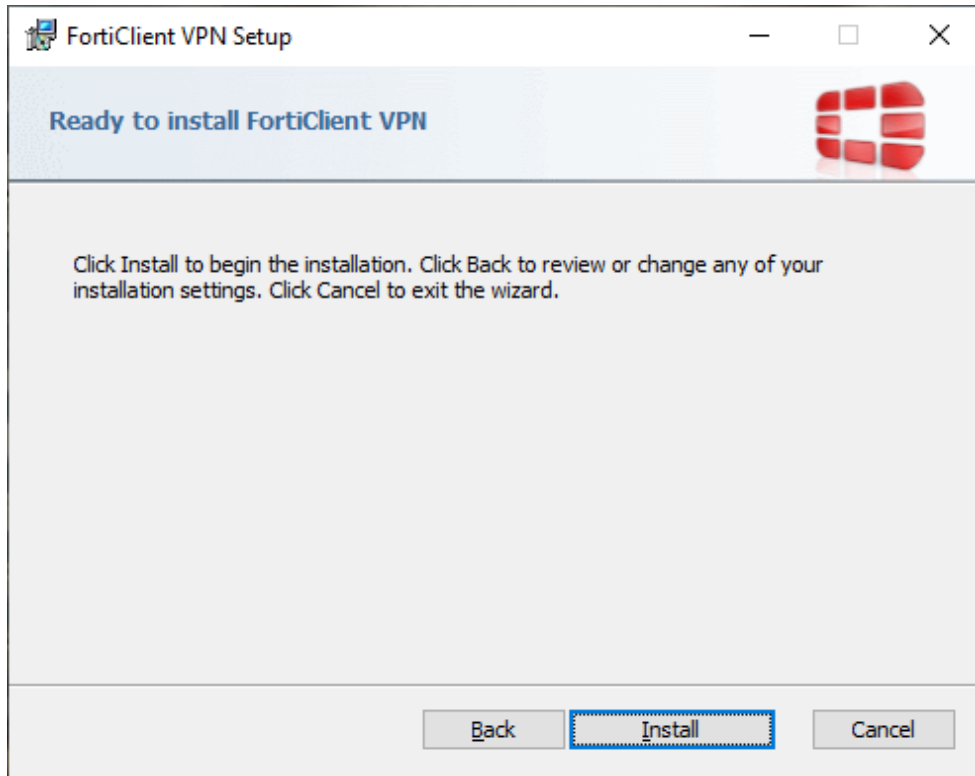
Click "Download FortiClient" button drop down box under SSL-VPN Portal.

Choose your platform (Windows, Mac, etc)



Open the install file after it's finish downloading.

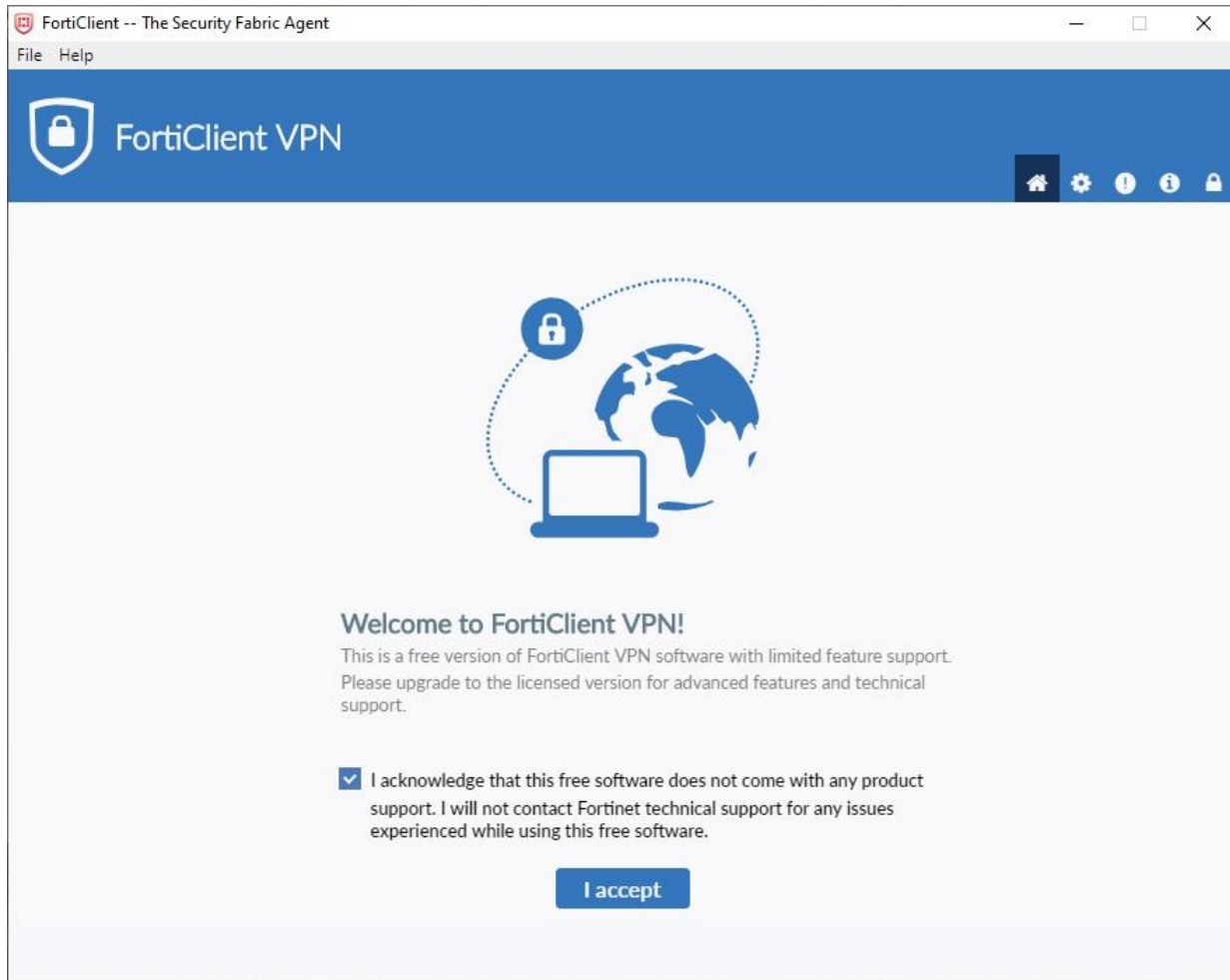




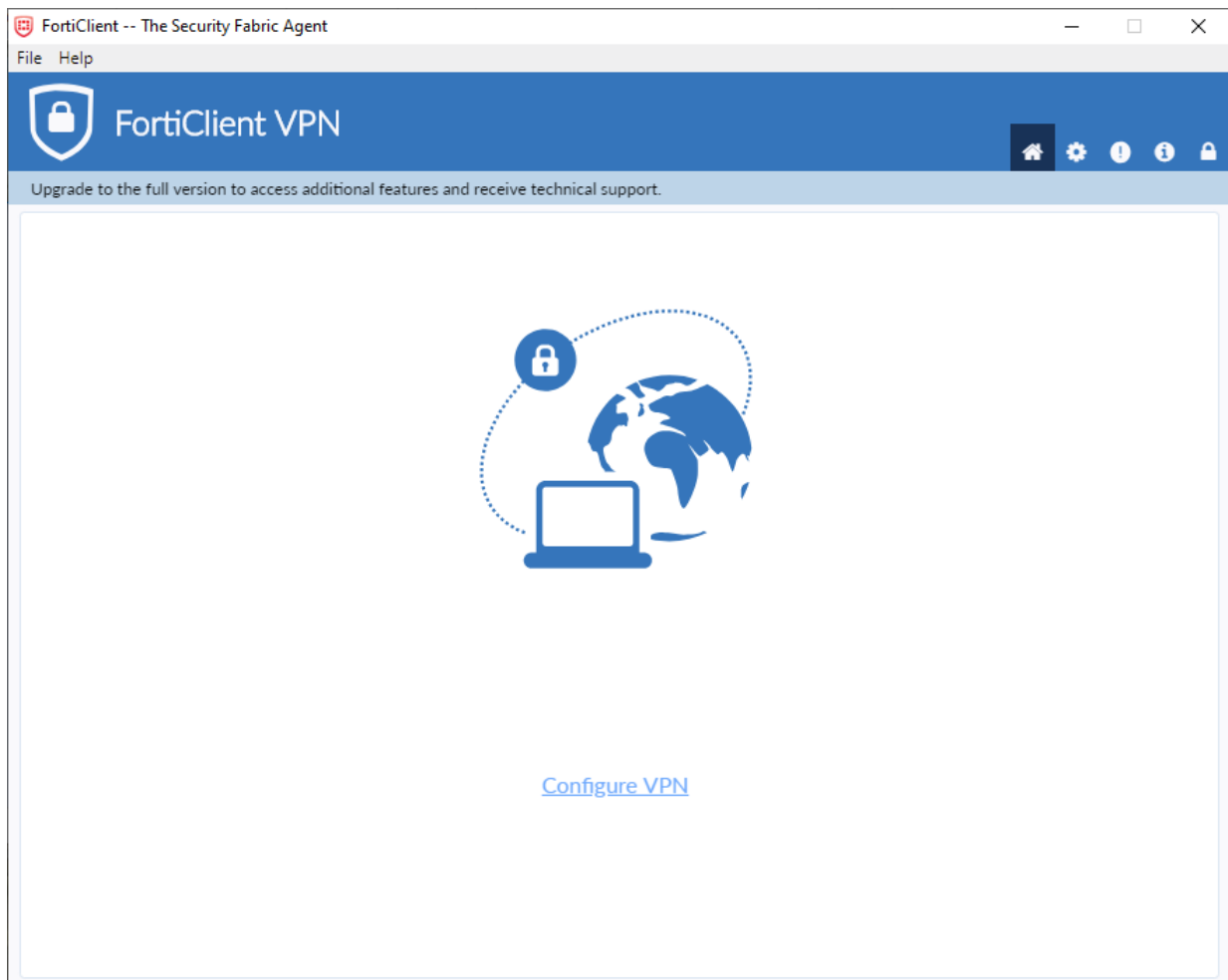
After it is finished, you should have an icon on your desktop like this:



Launch the client, click the “I acknowledge...” box and click “I accept” button.



Click the Configure VPN link



Fill out the information as shown and click Save:

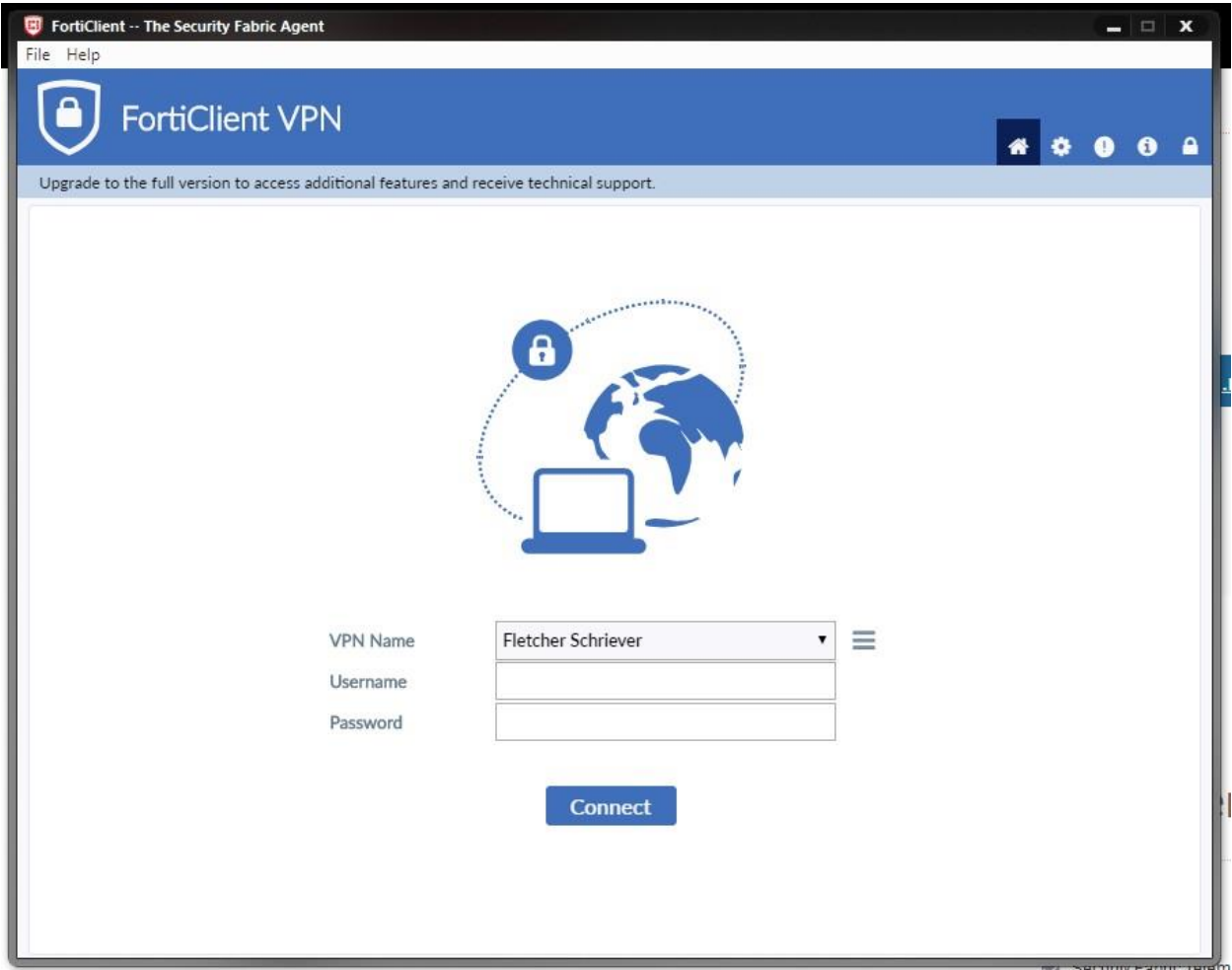
The screenshot shows the FortiClient VPN configuration window. The title bar reads "FortiClient -- The Security Fabric Agent" and "File Help". The main window has a blue header with the FortiClient logo and the text "FortiClient VPN". Below the header, there is a notification bar that says "Upgrade to the full version to access additional features and receive technical support." The main content area is titled "Edit VPN Connection".

Under the "Edit VPN Connection" title, there are two tabs: "SSL-VPN" (selected) and "IPsec VPN". The configuration fields are as follows:

- VPN:** SSL-VPN (selected), IPsec VPN
- Connection Name:** Fletcher Schriever
- Description:** (empty)
- Remote Gateway:** vpn.fletcher.edu (with a close icon 'x' on the right)
- +Add Remote Gateway:** (button)
- Customize port:**  Customize port 443
- Client Certificate:** None (dropdown menu)
- Authentication:**  Prompt on login,  Save login,  Do not Warn Invalid Server Certificate

At the bottom of the dialog, there are two buttons: "Cancel" and "Save".

Now all you will have to do is type in your network username and password and click the Connect button:



Once it connects, you should have access to your network as normal.